



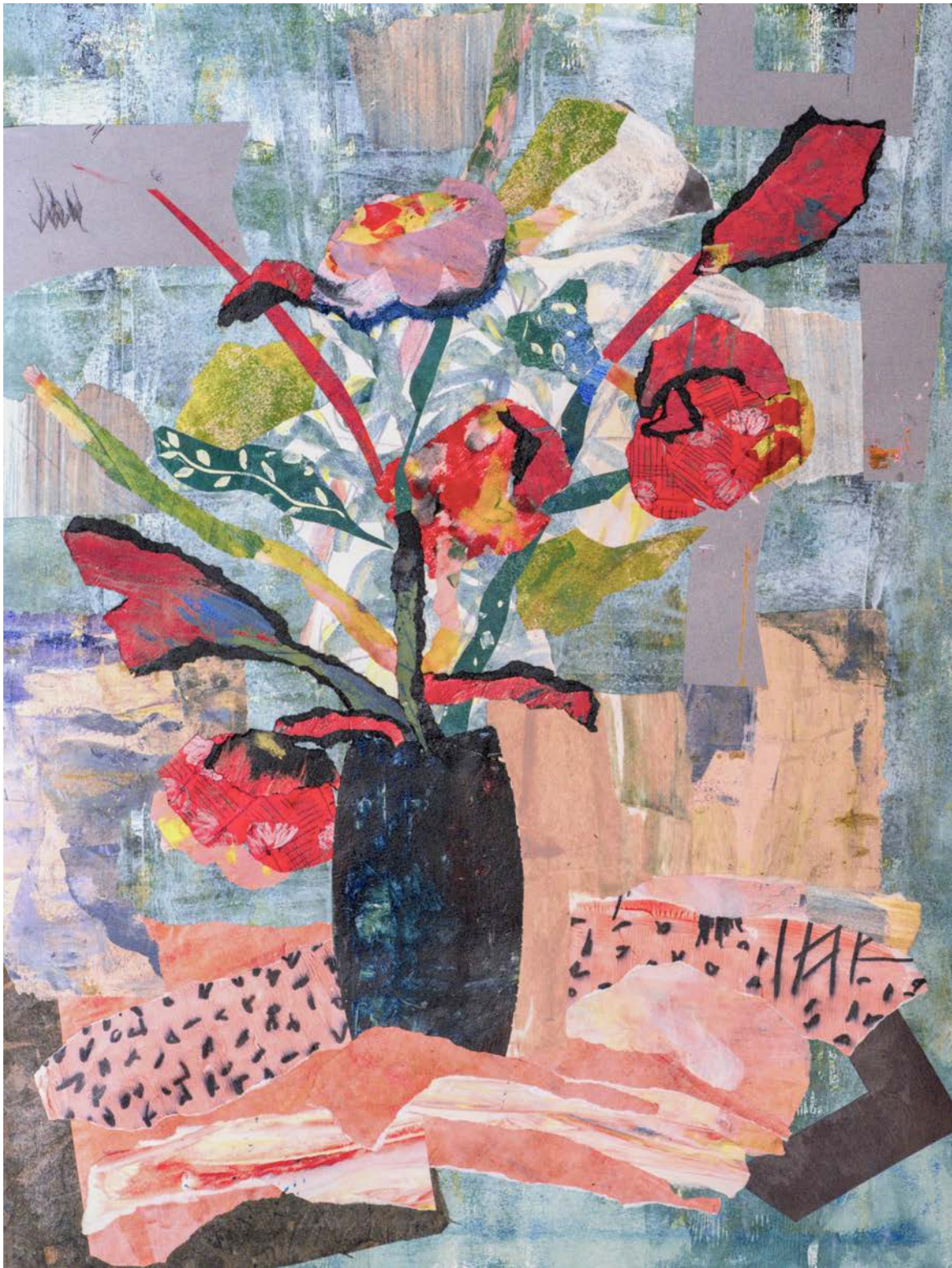
MARA WAGNER

Treehouse Studio, Cambridge



Begonia and Blues
Painted papers collage
18x24

Cover Page
Striped Flowers on Rounded Tray
Painted papers collage
18x24



Poppies in the Window
Painted papers collage
18x24



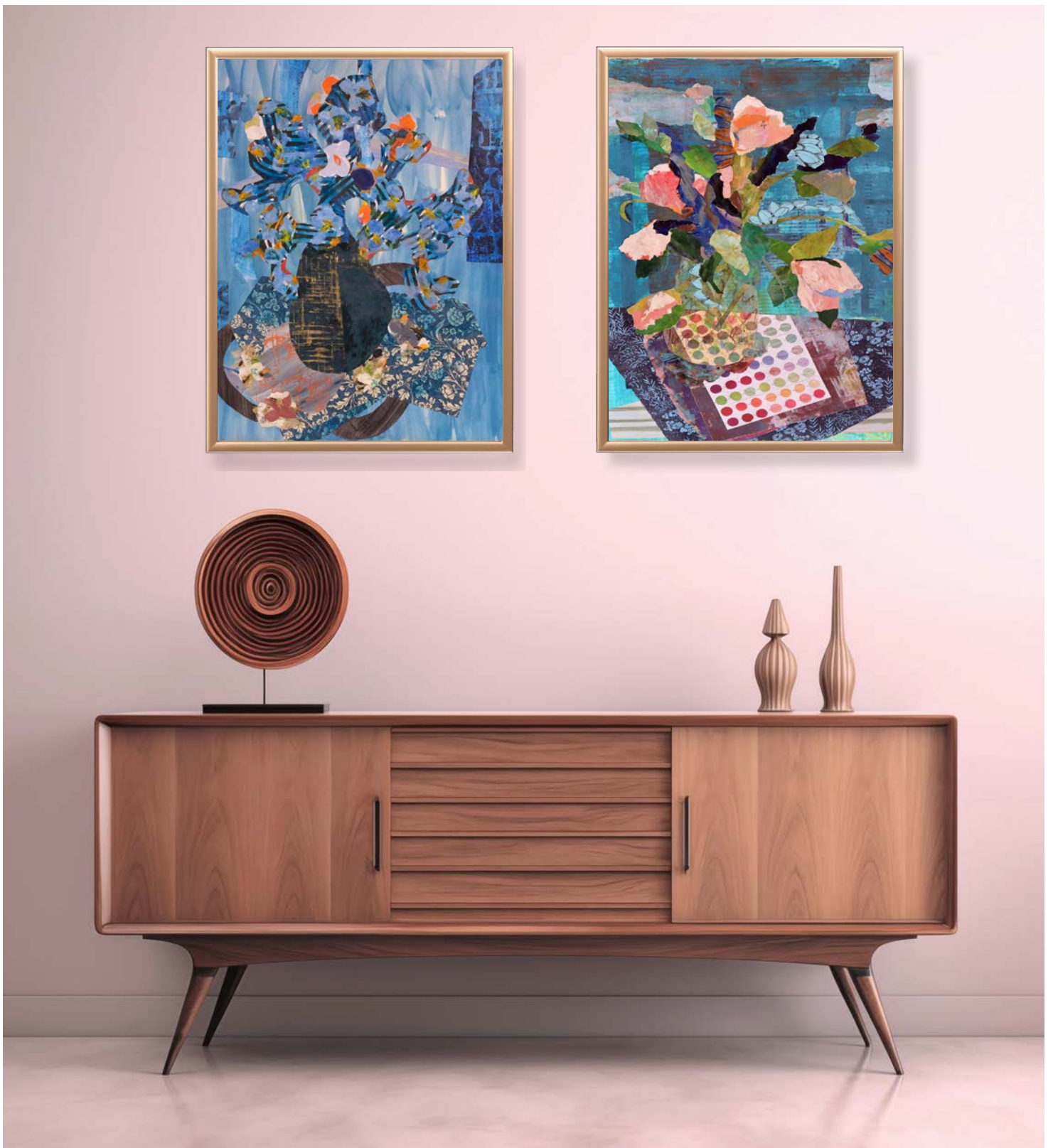
Almost Lemonade
Paint and papers collage
24x30



All About the Wallpaper
 Painted papers collage
 23x21



Emily's Tablescape
 Painted papers collage
 37x32



Striped Flowers on Rounded Tray
Painted papers collage
18x24

Nancy's Flowers
Painted papers collage
38x26



Emily's Blue Gloves
Painted papers collage
20x24



Sunflower and Dove
Painted papers collage
18x24



Blue Hydrangea
Painted papers collage
18x24



White Hydrangea for Emily
Painted papers collage
18x24



Emily's Flowers
Painted papers collage
18x24



Orange Teapot and Candlesticks
Painted papers collage
18x24



Ms Matisse?
Painted papers collage
18x24



Studio Window Vase on Pink
Painted papers collage
18x24



Nefertari and Crane
Painted papers collage
30x24



Nefertari and Bowls
Painted papers collage
30x24

Artist Statement

Once impulsively describing herself as an accidental artist; on reflection, Mara Wagner believes this must be because the work she likes best has come from periods of wandering and play, or from improvising with pieces of earlier work, rearranging things into a more coherent whole. Acrylics, water soluble crayons, pens, papers, fabric and thread, glue and scissors are very amenable to this process and can sustain the accidental flow that wakes her up.

Often she works from a still life set-up with her favorite domestic objects - dishes, flowers, and small statues. Or she looks at a painting she admires as a way to then improvise on its composition or color. Occasionally Mara works from photographs, beginning upside down for best effect. Her day job as a psychoanalyst brought her back into touch with a lost creative drive that seems to take her, on its own steam, to places she can later study with a more purposeful eye, as with dreams and session notes.

"Vibrant and jewel-like, Mara's work in various media is both challenging and approachable. It is layered and complex and evokes feelings of delight and joy. I am lucky to have a piece that brings me continued pleasure."

- a new collector

Contact the Artist

marawagnerart.com
@aberdeentreehousestudio
drmarawagner@gmail.com
Treehouse Studio, Cambridge (by appointment)

Biography

Mara began making art in 2001, beginning with blind contour drawing and moving to collage, acrylic painting and hand-stitching.

In 2003 she founded Gallery 1581 inside the Boston Graduate School of Psychoanalysis, where she teaches and practices as a psychoanalyst. The gallery's mission is to create a space for dialogue and interaction between artists and psychoanalysts, both of whom draw heavily on images from the unconscious. An article featuring Mara's curatorial work at Gallery 1581 appeared in the Arts Outlook section of Brookline Magazine in May 2007; Curious Curator. Gallery 1581 has held exhibitions as often as once a month and as rarely as once a year and has built a lively permanent collection.

Mara assisted for several semesters in the mid 2000's at Mass College of Art and Design in a graduate course for media designers, "Design as Experience" helping connect the students with unconscious layers of their creations, with an eye toward the eventual users of their products, and served as a thesis adviser.

She is a member of Concord Art Association, Cambridge Art Association, Newburyport Art Association, and Surface Design Association. Her works have won Best in Show awards, Juror's Choice Awards, and earned her guest invitations to area galleries. Mara has studied with Nancy Gruskin and Emily Passman through Concord Art Association; Kimberly Becker and Berri Kramer of Flying With Scissors Studio; and at Black Pond Studio with Catherine Kehoe, Jennifer Pochinski and Erin Raedeke. Finally, with Matt Klos in Tavira Portugal.

She maintains Treehouse Studio in Cambridge, MA. She enjoys time spent on Plum Island, MA, throughout Boston, and abroad with family and friends.

You can often see her work at Cambridge Art Association, Concord Art Association, Three Stones Gallery, Galaray House, Boston Psychoanalytic Society and Institute, Gallery 1581, or in her studio by appointment.

For pricing and availability, visit marawagnerart.com



CV

Awards

Fall 2024, Roddy Exhibition, Concord Art Association, Juror's Prize
Spring 2023, National Prize Show, Cambridge Art Association, Juror's Choice Award
October 2022, "BLUE" Cambridge Art Association, Best in Show

Select Exhibitions

Winter 2025, Guest Artist, "Paint, Pencil Paper", Three Stones Gallery
Winter 2025, "Form and Flow", Gallery 1581
Winter 2025, Members' Prize Show, Cambridge Art Association
Winter 2025, Gallery 1581, Solo Show
Winter 2025, Cambridge Health Associates, Solo Show
Winter 2025, "Immigration; Joys and Hardships", Roslindale Public Library
Winter 2025, Concord Art Association, Members Show
Winter 2024, Small Works, Bromfield Gallery
Winter 2024, Aura, Cambridge Art Association
Fall 2024, Roddy Exhibition, Concord Art Association, Juror's Prize
Fall 2024, Fall Salon, Cambridge Art Association
Summer 2024, Galaray House, Guest Artist
Summer 2024, Guest Artist, "Call Me Forward Call Me Back", Three Stones Gallery
Winter 2023, Members' Prize Show, Cambridge Art Association
Fall 2023, (A)Temporal, Cambridge Art Association
Fall 2023, Member's Juried 1, Concord Art Association
Summer 2023, Guest Artist, "The Chi of Everything", Three Stones Gallery, Concord, Ma.
Spring/Summer 2023, Annual Juried Exhibition, Danforth Museum
Spring 2023, Artesis Gallery, pop-up show, Tavira, Portugal
Spring 2023, National Prize Show, Cambridge Art Association, Juror's Choice Award
Spring 2023, "Myra Wilson and Friends", Honeyjones Studio
Spring 2023, "Hand Me Down", Gallery 263
Spring 2023, "100: Commemorating the Hundredth Anniversary of the Attleboro Arts Museum"
Winter 2023 to present, Stylish, antique shop, Belmont, Ma.
Winter 2023, Member's Prize Show artist talks, Cambridge Art Association
Winter 2023, Members Prize Show, Concord Art Association
Winter 2023, Member's Juried #2 Show, Concord Art Association
Fall 2022, Roddy Exhibition, Concord Art Association
Fall 2022, Lincoln Library, Solo Exhibition
June 2022, Regional Juried Show, Newburyport Art Association
May 2022, "Variations" Marblehead Art Association
October 2022, "BLUE" Cambridge Art Association, awarded Best in Show
October 2022, "BLUE" Artist Talks at Cambridge Art Association
March 2022, Cambridge Art Association, Members Prize Show
March 2022, Cambridge Health Associates, "Meditations From the Quarantine Studio", solo show
2019, Cambridge Health Associates, "Free Association", solo show
2019, Boston Psychoanalytic Society and Institute, "Free Association"
2018, Open Studios, Cambridge
2019, Open Studios, Cambridge
2001-present, Gallery 1581, Boston Graduate School of Psychoanalysis



MARA WAGNER

Treehouse Studio, Cambridge, by appointment
marawagnerart.com
[@aberdeentreehoustudio](https://www.instagram.com/aberdeentreehoustudio)
drmarawagner@gmail.com